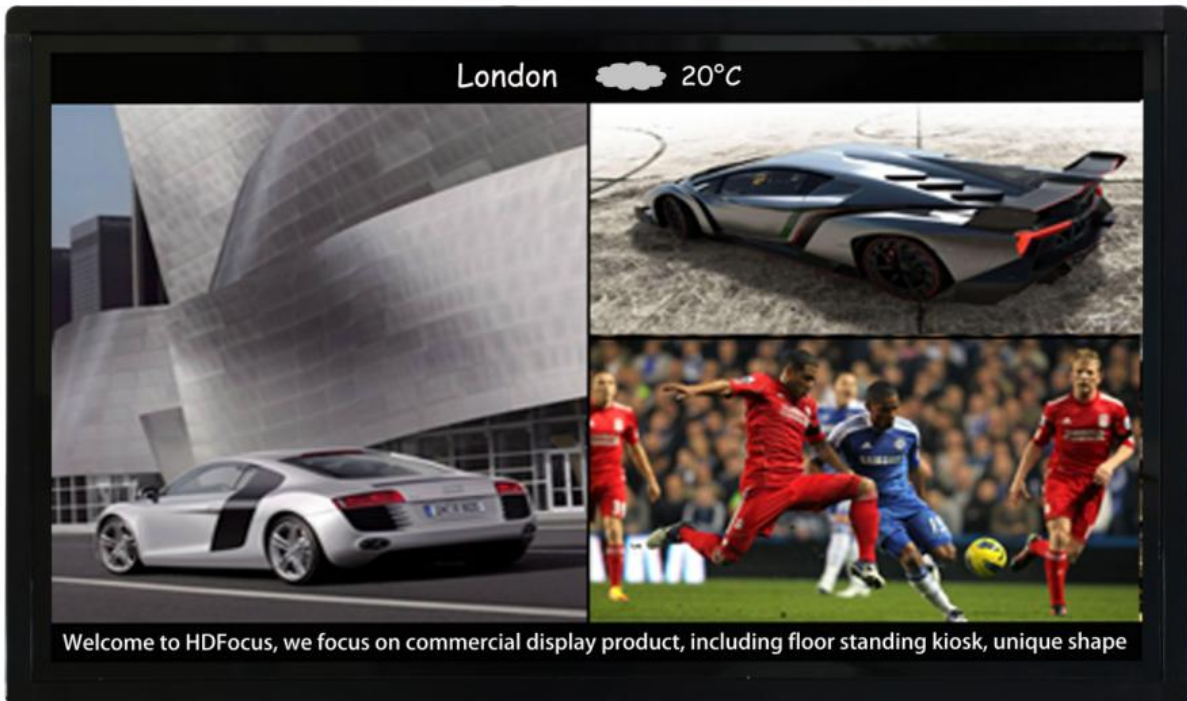


HDFocus Specification

Wall Mounted Kiosk HD-42W-T Windows Maxplus

42" Wall Mounted Kiosk with Touch HD-42W-T Windows Maxplus

1. Product Outlook



Overview



Front



Back

2. Main Features

- ✓ Excellent design with apple shape, aluminum edging ;
- ✓ 42" brand new original LG panel with LED backlight;
- ✓ Windows OS, can customize Android OS;
- ✓ Support sensitive 10 points IR touch;
- ✓ Support to use USB to play content directly;
- ✓ Color available: Black, can customize other colors;
- ✓ Support networking central controlled by HD-DS software, total solution;
- ✓ Support Ethernet and WIFI connection(Standalone version do not support);
- ✓ Industrial level design, support 24/7 working.
- ✓ CE and ROHS certified.

3. Display

Display Panel	42" LCD screen with LED backlight
Display Ratio	16:9
Color	16.77M colors
Display area	942.2*530.4mm
Pixel Pitch	0.4845*0.4845mm
Resolution	1920*1080
Brightness	500cd/m ²
Contrast	3000:1
Response Time	5ms
View Angle	178° left and right, up and down
Life	6000 hours

4. PC Performance

CPU	Intel i7, 1.8G Hz
RAM	DDR3 4G
Storage	128G SSD
Main Board	Industrial board
Network Card	10/100M/1000M adaptive card
WIFI	Support WIFI
OS	Windows 7,8.1 and 10 trial version

5. Interface

USB	USB*4
COM	COM*1
HDMI Output	HDMI*1
VGA Output	VGA*1
MIC Audio Input	MIC Audio*1
Line Audio Output	Line*1
Network	RJ45*1, built-in Gigabit Ethernet
WIFI	WIFI*1, support 802.11 b/g/n

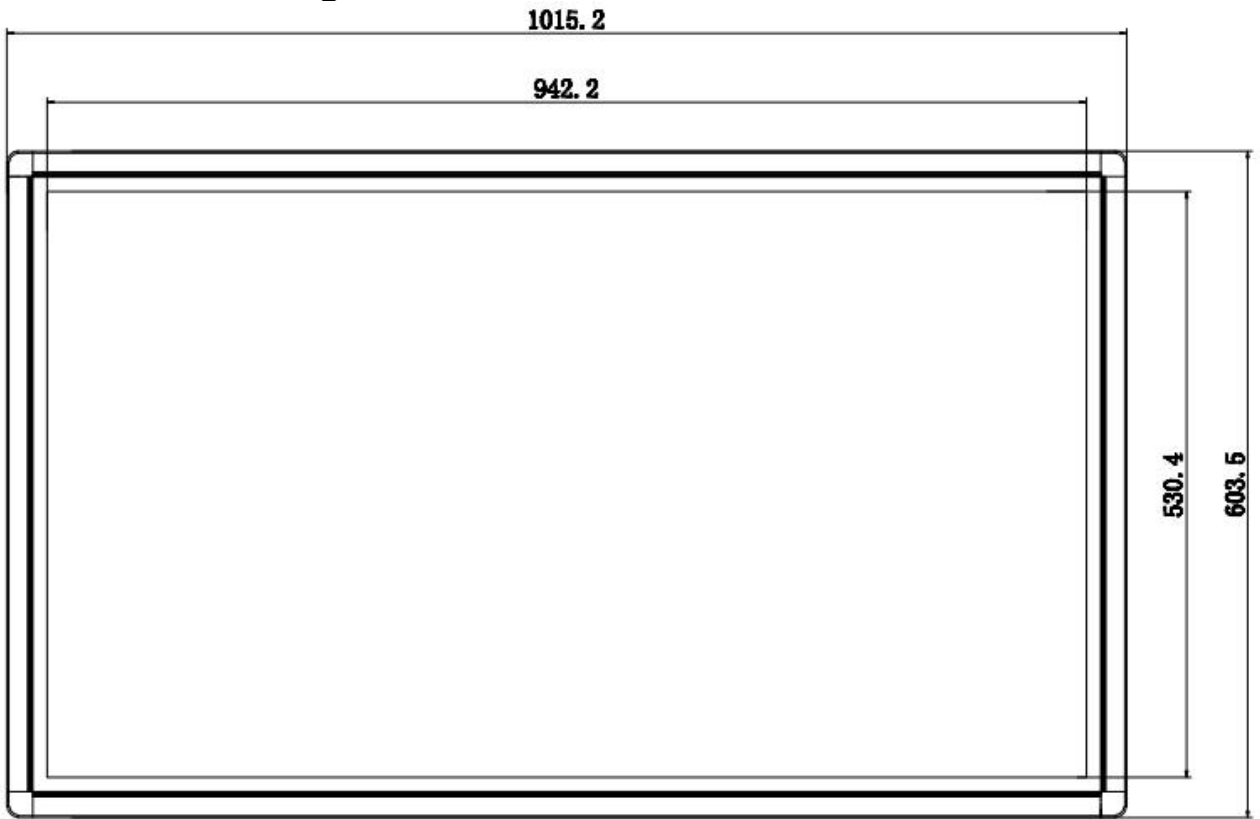
6. IR Touch

Touch Type	Infra-red
Points	10 points
Glass cover	Tempered glass cover
Response Time	Less than 5ms
Resolution	32767 * 32767
Position Accuracy	±1.5mm
Communication	USB2.0
Life Time	Over 60,000,000 touches

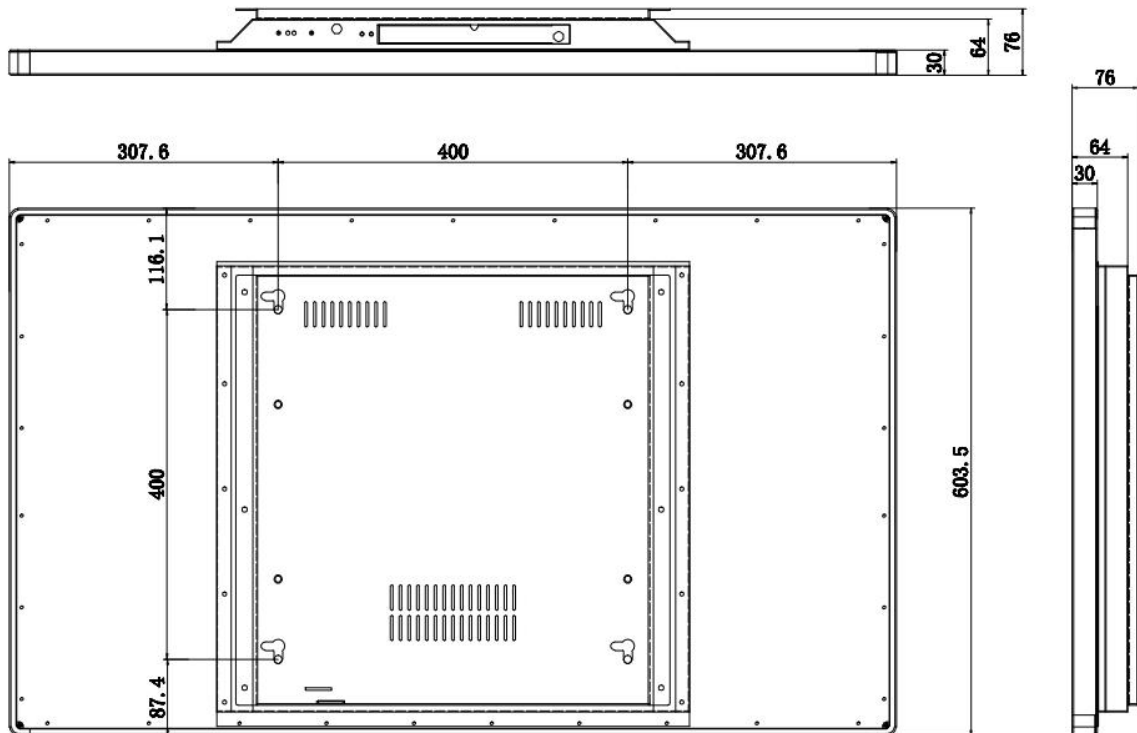
7. Others

Net Dimension	1015.2*603.5*64mm
Color	Silver Black, can customize
Gross Weight	35KG
Wall mount Rack	Standard Rack*1
Voltage	220-240V 50/60Hz
Power	≤ 100W
Working Temperature	0— 40 °C

8. Dimension Drawing

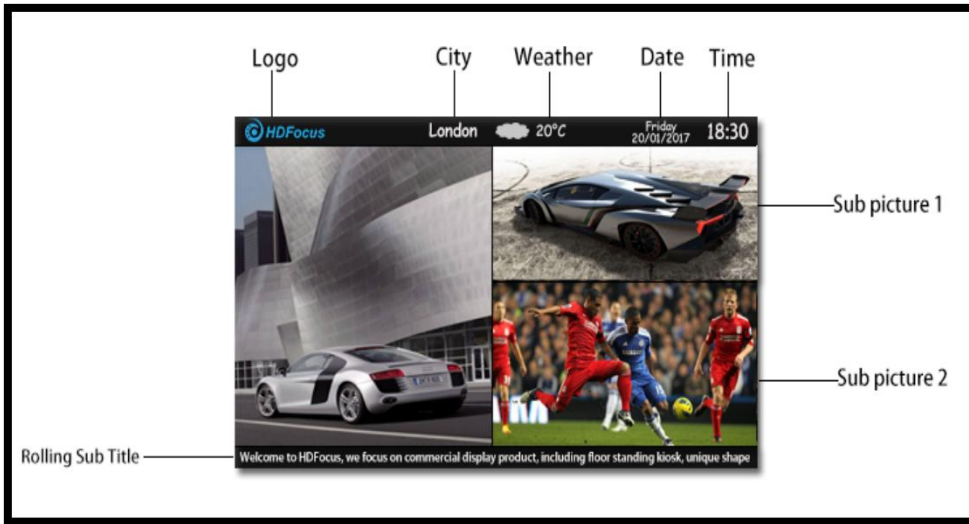


Front and Side

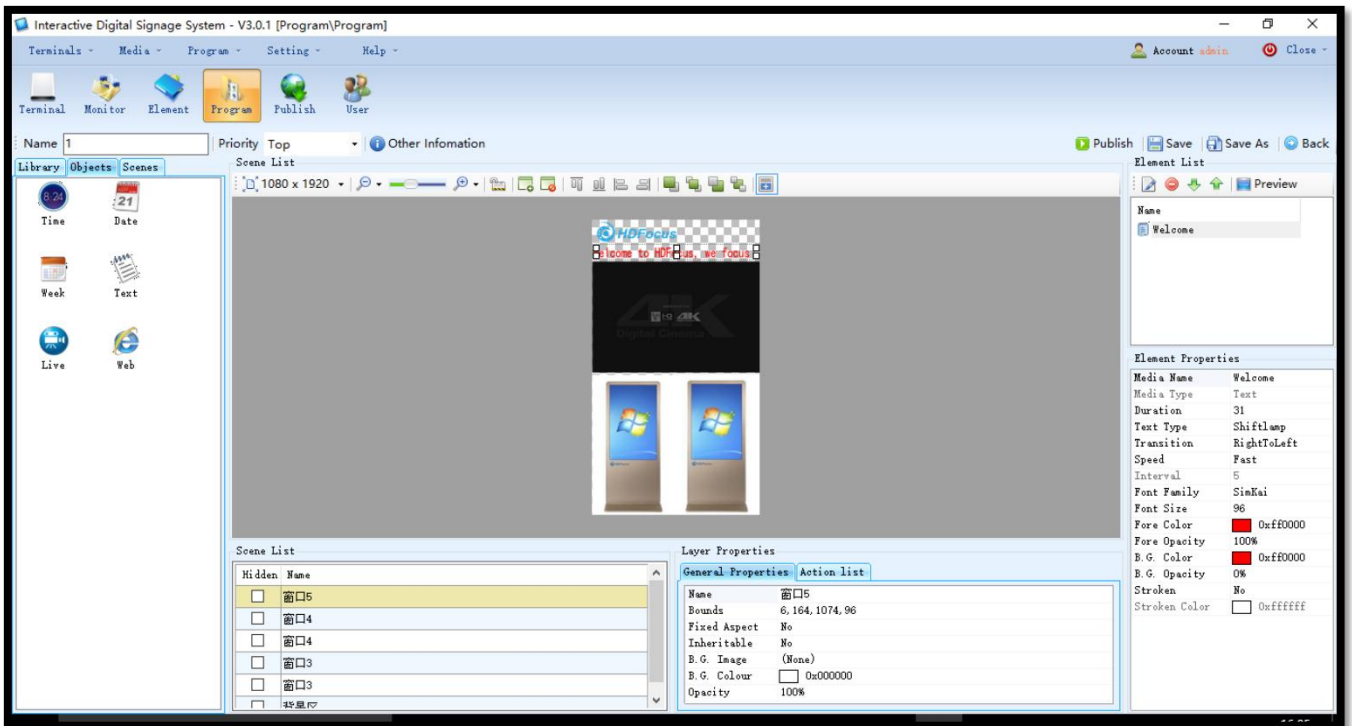


Back

9. HD-DS RDS version Digital Signage Software

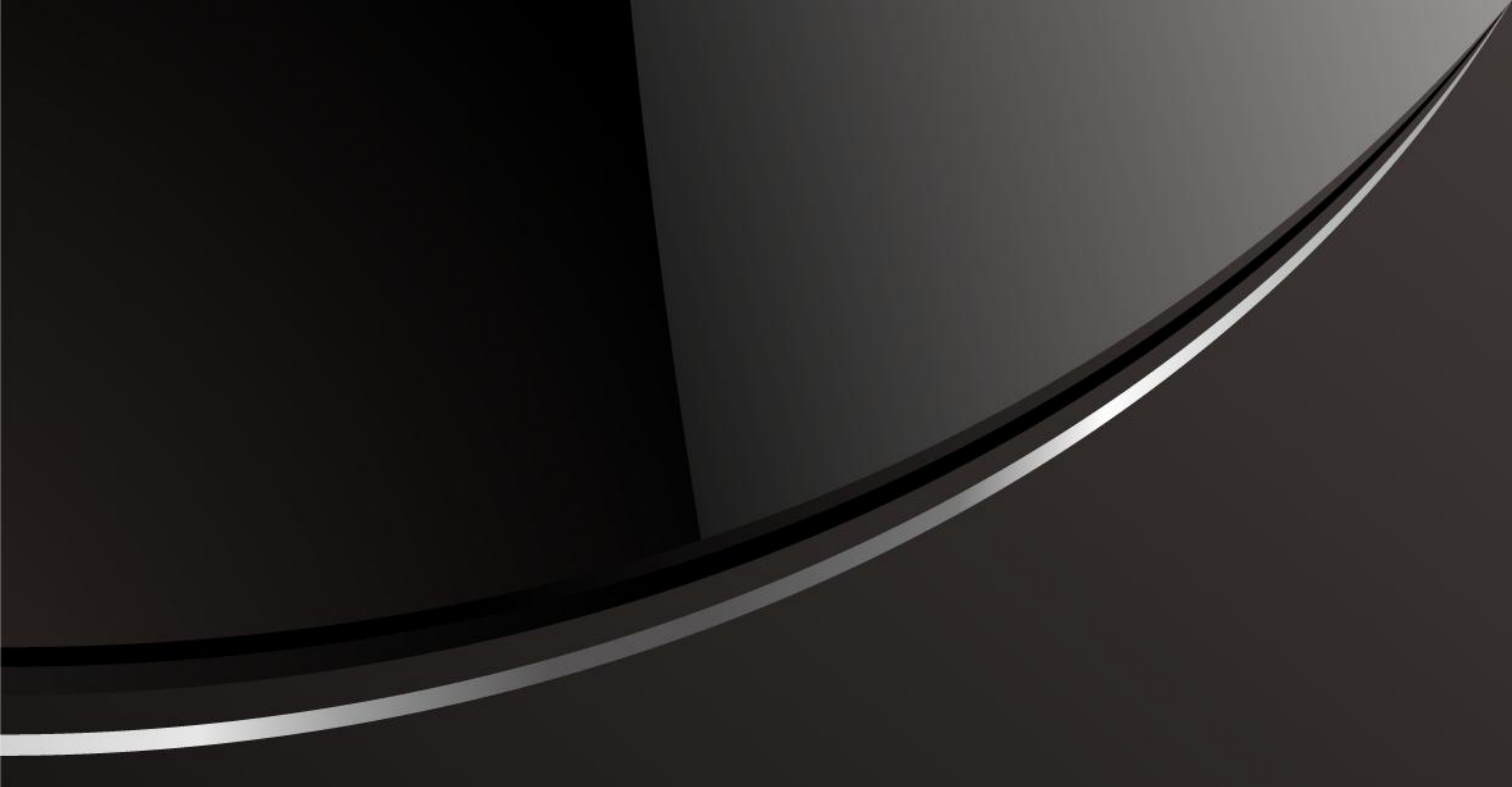


Program Interface Edited by HD-DS RDS version Software



HD-DS Key Features:

- ✘ Easy to operate, user can manage the system anywhere as long as he has internet access;
- ✘ Support online edit program and release program;
- ✘ Support visually make program, can preview the program immediately;
- ✘ Support centrally manage the system, but every terminal will download the program and play locally;
- ✘ Networking based, central control of multiple kiosks;
- ✘ Remotely control, such as restart, volume adjust, system upgrade;



Shenzhen HDFocus Technology Co., Ltd

Add: 5th Floor, 51 Building, Bantian No. 3 Industrial Park, Bantian Community, Bantian Street,
Longgang, Shenzhen, China 518129
T: 0086 755 8520 4829

Web: www.hdfocuspro.com